

Product:

Shorguard Adjustable Base Shoe

Product Code :

SG/ADJ/COMP

Product Description:

Manufactured using 900 x 150 x 12mm and 150 x 40 x 5mm flat S275 grade steel, with 60.3 x 3.2mm S235 grade tube mitred at 10 degrees

Weight:

14.80kg

Testing/Standards:

Tested to Class A BS EN 13374:2013+A1:2018 incorporating corrigendum January 2019

Wind loading calculations to BS EN 1991-1-7:2006+A1:2014

Galvanised to EN ISO 1461

Guidance:

Transportation - care must be taken when transporting Shorguard to ensure they are not bent beyond their limits, while ensuring the base shoes are banded and wrapped in their storage and secured to the vehicle using straps at appropriate intervals.

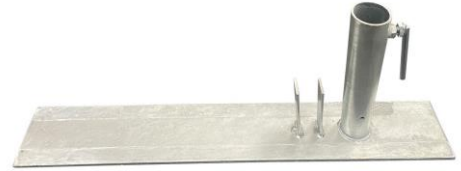
Handling - care must be exercised when manually handling Shorguard.

Storage - all components should be stored in a manner that limits any detrimental environmental effect due to weather or corrosive substances.

Inspection - all temporary systems should be checked at least once every 7 days by a competent person, ensuring any defective products identified are replaced immediately.

Traceability - all Shorguard products supplied by Trademagic are fully traceable with unique identification code.

Installation - base shoes must be placed in a way not to exceed 2.00m centres.



For more detailed guidance, please refer to our Shorguard SG4 brochure